

# Underwater lighting

12v 35w 50w LED IP68

## Neptune underwater lights

are versatile, safe 12v accent lights or recessed uplights for wet locations using a 12v MR16 20-50w halogen reflector lamp or low energy l.e.d. lamp: **Neptune** fitted with new **Powersaver** 50w energy-efficient halogen lamps is equivalent to an ordinary 75w halogen spotlight. **Neptune** features stainless steel screw fixings and robust construction in cast brass or 316 grade stainless steel, providing more certain location in water than lighter aluminium or plastic underwater lights. A thicker 1.5mm<sup>2</sup> 6 metre cable reduces cable voltage drop to improve lamp efficiency and facilitates ease of connection to a remote transformer without use of underwater joints. A wide range of mounting accessories is available including recessed, spike, surface and post mounts.

There are 4 **Neptune** models in a choice of sandblasted brass, black powder-coat and brushed stainless steel finish - with plain front for general use, grid providing glare protection in shallow water, glare shield concealing the light source in uplighting applications, while eyelid hood performs the same function in horizontal lighting in rills etc. **Neptune** is rated for 50w halogen lamps underwater, maximum 35w above water and maximum 20w in recessed applications in walkover areas, where an MR16 led module is a recommended option for a cool lens. Low energy, long life options range from 1w l.e.d. lamp (equivalent to 10w halogen) to 6w l.e.d. lamps equivalent to 50w halogen lamps.



Neptune Brass with plain front

**Neptune Brass's** fine sandblasted finish and brass stirrup bracket weather to an ochre colour to blend with stone, gravel and other landscape materials

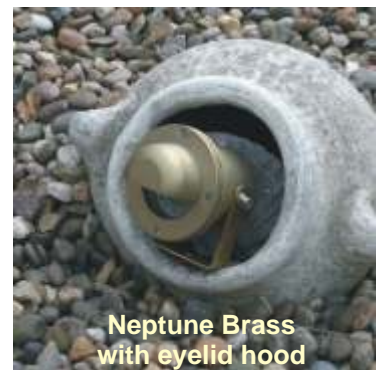
- E2561 with plain front
- E2562 with grill
- E2563 with glare shield
- E2564 with eyelid hood



Neptune Brass with grill & spike mount



Neptune Brass with glare shield



Neptune Brass with eyelid hood

**Neptune Black** is powder-coated brass for discrete location combined with longevity and the weight for firm location in black-lined water features.

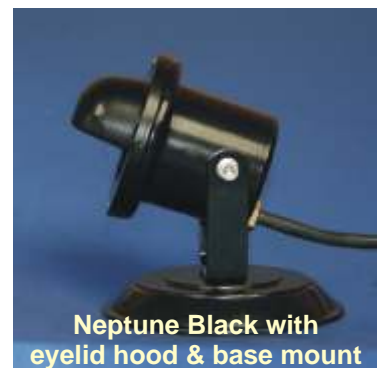
- E2531 with plain front
- E2532 with grill
- E2533 with glare shield
- E2534 with eyelid hood



Neptune Black with glare louvre & base mount



Neptune Black with glare shield



Neptune Black with eyelid hood & base mount

**Neptune Stainless** in 316 grade stainless steel combines style and durability in water features with decorative linings or stainless steel construction.

- E2511 with plain front
- E2512 with grill
- E2513 with glare shield
- E2514 with eyelid hood



Neptune Stainless with glare shield



Neptune Stainless with grill



Neptune Stainless with eyelid hood

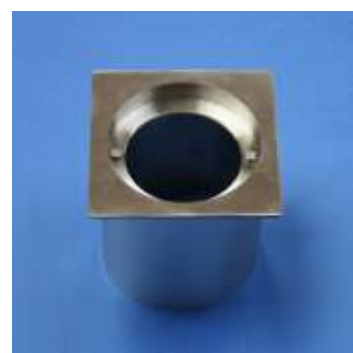
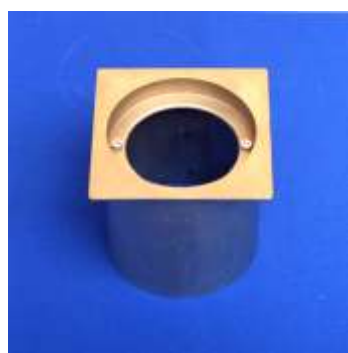
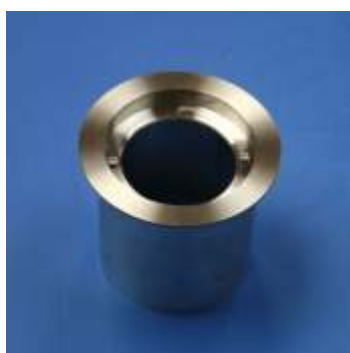
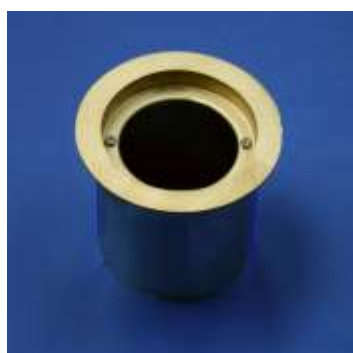
# Neptune Recessed

**Neptune** brass and 316 stainless steel 12v underwater lights can be installed as IP68 35w recessed lights using matching **Neptune** round or square recess niche and stainless steel sleeve. The body of the **Neptune** is screwed into the recess niche with the 2 screws supplied before fitting the gasket, lens and front plate. The niche and sleeve may be installed prior to paving or wall construction, with the provision of conduit to allow the 6m cable to be connected to the transformer position later. **Neptune Recessed** lights are ideal for fixed uplighting applications such as feature planting, small trees, columns, gate pillars and facades, as well as a choice of square recessed steplights. *Maximum lamp power above water: 35w. See separate page for details of Neptune underwater lights*



**12v 35w LED IP68**

< E2500F flush frosted lens may be fitted in place of the standard clear lens to provide diffused lighting in underwater or recessed applications. Optional clip-on MR16 spread lens, honeycomb glare filter and colour filters may be fitted internally to create alternative lighting effects (see Filters and lenses page)

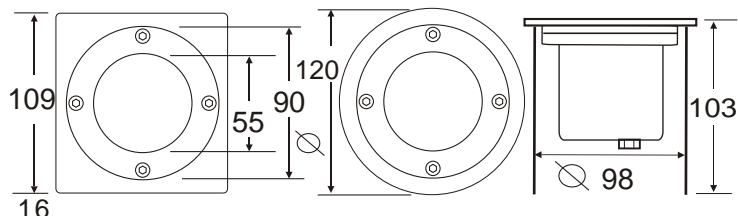


## Neptune Lamp Energy Ratings

|          |                     |
|----------|---------------------|
| <b>A</b> | 12v L.E.D. LAMPS    |
| <b>B</b> | HALOGEN Powersavers |
| <b>C</b> | 12v HALOGEN LAMPS   |

| Halogen / I.e.d. lamp comparison |           |                        |               |
|----------------------------------|-----------|------------------------|---------------|
| Powersaver                       | Standard  | I.e.d. lamp equivalent |               |
| -                                | 20w 36°   | MR16LED3W              | 3w white      |
| 20w 36°                          | 35w 36°   | MR16LED6WW             | 6w warm white |
| 35w 36°                          | 50w 36°   | MR16LED6W              | 6w white      |
| -                                | 35w 36°** | MR16LED3B              | 3w blue       |

\*\* with blue filter



| Neptune lights for recessed applications |  |
|--|--|
| 316 Stainless Steel                      |  |
| E2511                                    | Neptune underwater light - 316                     |
| E2512                                    | Neptune underwater light with grill - 316          |
| E2513                                    | Neptune underwater light with glare shield- 316    |
| E2514                                    | Neptune underwater light with eyelid - 316         |
| Brass                                    |  |
| E2561                                    | Neptune underwater light - Brass                   |
| E2562                                    | Neptune underwater light with grill - Brass        |
| E2563                                    | Neptune underwater light with glare shield - Brass |
| E2564                                    | Neptune underwater light with eyelid - Brass       |
| Neptune recessed accessories             |  |
| E2510N                                   | Neptune recessed niche & cylinder - 316 - Square   |
| E2510R                                   | Neptune recessed niche & cylinder - 316 - Round    |
| E2560N                                   | Neptune recessed niche & sleeve - Brass - Square   |
| E2560R                                   | Neptune recessed niche & cylinder - Brass - Round  |
| MR16AHL                                  | Clip-on Honeycomb louvre - black                   |
| MR16AZHL                                 | Clip-on Honeycomb louvre - Silver grey             |
| E2500F                                   | Neptune flush frosted lens                         |



# Neptune Accessories

| 316 Stainless Steel |   |
|---------------------|---|
| E2510B              | Neptune mounting base - 316                       |
| E2510C              | Neptune base extension kit - 316                  |
| E2510L              | Neptune stem extension kit - 316                  |
| E2510M              | Neptune spike mount - 316                         |
| E2510N              | Neptune recessed niche & cylinder - 316 - Square  |
| E2510R              | Neptune recessed niche & cylinder - 316 - Round   |
| Black               |   |
| E2530B              | Neptune mounting base - Black                     |
| E2530C              | Neptune base extension kit - Black                |
| E2530L              | Neptune stem extension kit - Black                |
| E2530M              | Neptune spike mount - Black                       |
| Brass               |   |
| E2560B              | Neptune mounting base - Brass                     |
| E2560C              | Neptune base extension kit - Brass                |
| E2560L              | Neptune stem extension kit - Brass                |
| E2560M              | Neptune spike mount - Brass                       |
| E2560N              | Neptune recessed niche & sleeve - Brass - Square  |
| E2560R              | Neptune recessed niche & cylinder - Brass - Round |

See separate page for details of Neptune recess accessories

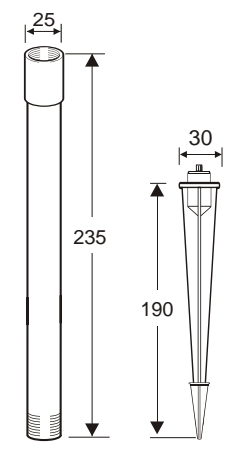
## Neptune Lamp Energy Ratings

|          |                     |
|----------|---------------------|
| <b>A</b> | 12v L.E.D. LAMPS    |
| <b>B</b> | HALOGEN Powersavers |
| <b>C</b> | 12v HALOGEN LAMPS   |

| Halogen / l.e.d. lamp comparison |           |                        |               |
|----------------------------------|-----------|------------------------|---------------|
| Powersaver                       | Standard  | l.e.d. lamp equivalent |               |
| -                                | 20w 36°   | MR16LED3W              | 3w white      |
| 20w 36°                          | 35w 36°   | MR16LED6WW             | 6w warm white |
| 35w 36°                          | 50w 36°   | MR16LED6W              | 6w white      |
| -                                | 35w 36°** | MR16LED3B              | 3w blue       |

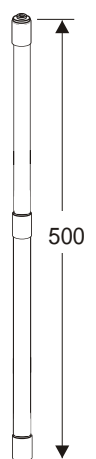
\*\* with blue filter

Base Mount is a solid base plate for mounting Neptune in the bottom of a water feature or on a marginal shelf, or as a portable spotlight in conservatories or paved areas where arrangements of planted pots may change. Dimensions: 13cm diameter x 2cm >

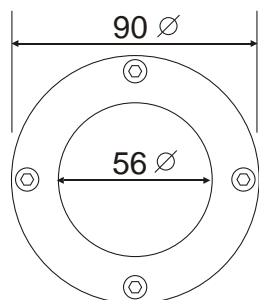
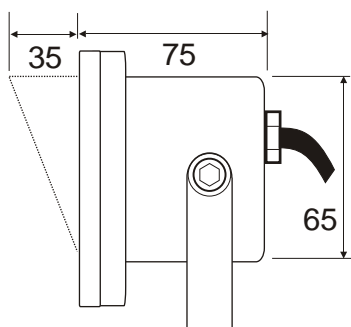


A base extension kit may be added to a mounting base to install an underwater light where there is no marginal shelf or other location for a mount alone.

The optional spike mount can be used to discretely locate Neptune in a planting basket or pot. A stem extension kit may be added for installation on a spike in a planting basket or pot in deeper water.



Position lights 15-20cm under the water surface for best effect



A stem extension kit and base extension kit may be combined together for installation on a base in deeper water