

R3606B Atlantis underwater light with glare shield – 12v IP68 Solid brass, black powder coat

Atlantis 12v brass underwater spotlight with glare shield designed for submersion in water features. A shimmering lighting effect when used in conjunction with moving water adds another dimension to creative garden lighting design. Mounting bases, extension stems, clip-on colour filters and transformers are available but must be purchased separately.



PHYSICAL DATA

Atlantis IP68 rated, solid brass construction with a black, powder coat finish. Features a heat resistant, flush tempered clear glass lens. The light fitting measures 90mm in diameter x 110mm depth. Supplied with stirrup mounting bracket. High temperature 'O' ring seal and stainless steel screws complete the construction.

ELECTRICAL DATA

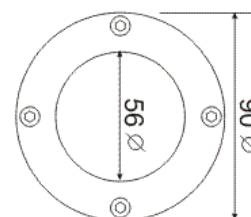
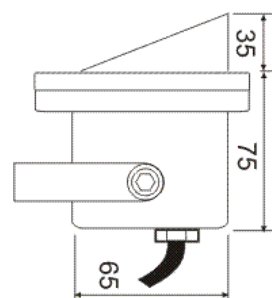
12v ac – Requires power from a transformer (purchase separately.) The light fitting accepts MR16 LED or MR16 halogen (up to 35w) lamps. Supplied with factory fitted 6m twin core HO7RN-F input cable.

INSTALLATION

A waterproof IP68 connection may be achieved by using either the GLWJB IP68 junction box or GLWCC waterproof cable connector

COMPLIANCE & WARRANTY

- 2 Year Warranty
- CE / RoHS Compliant



Lighting for Gardens Limited. Registered No.3678804.
Registered Office: Lower Clough Mill, Pendle Street, Barrowford, Lancashire BB9 8PH
VAT No 587 6855 66
Web: www.lightingforgardens.com
Email: technicalsupport@lightingforgardens.com

Product design & specification subject to change or modification without notice. Image for illustration only. E&OE
Ver1.0