

#### E4912 Compact adjustable twin wall spotlight - Stainless Steel- 240v GU10

The E4912 is a 240-volt compact wall light made from 316 grade stainless steel. It has a flush lens to prevent water accumulation, and a longer body to shield the lamp from view. It can accommodate a wide range of GU10 led or halogen lamps.



#### PHYSICAL DATA

The E4912 is an IP65 rated compact spotlight measuring 103mm x 63mm, mounted on a 77mm diameter x 53mm high base. The light stands proud from the surface by 90mm when parallel to the wall and is adjustable through 90°. There is sufficient distance internally between lamp holder and lens (72mm) to permit the fitting of optional glare louvre (*E4010*), frosted lens (*MR16AFL*) and a range of Dichroic clip on colour filters.

#### ELECTRICAL DATA

- 240v

#### COMPATIBLE LAMPS (purchase separately)

GU10COB30D 6w 550 lumen 30° warm white  
GU10COB185L 3w 60°2700k warm white  
GU10COB60D 6w 550 lumens 60° warm white  
GU10LED3.6WW 3.6w LED warm white

GU10LEDCWWN 3w LED wide beam warm white  
GU10LED3WW 3w warm white  
GU10LED5W 5w LED cool white 390 lumens  
GU10LED5WWN 5w LED 36° warm white  
Halogen lamps up to 35w

#### INSTALLATION

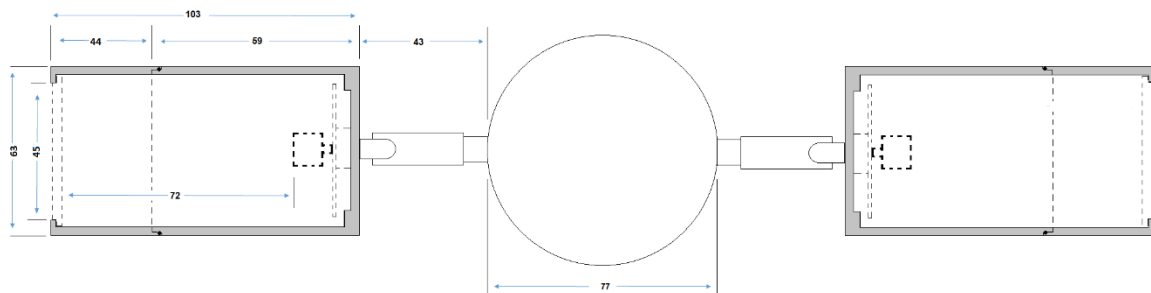
**Must be installed by a qualified electrician.** Unscrew bezel and insert lamp. Apply small amount of grease to thread and screw bezel back on to the body of the light. Use supplied fixings to attach base plate to the wall in desired location having fed the cable through the grommet on the rear of the mounting base. The use of T9990 sealant is recommended for effective seal around the cable entry. Cable connection is made via three-pole terminal block inside the base. Secure light to the base by tightening up the three grub screws. **Using a single RCD for large numbers of 240v fittings is not recommended due to the risk of nuisance tripping. We advise the use of separate RCD protection for each circuit and a maximum of 12 fittings per RCD**

#### COMPLIANCE & WARRANTY

- 2 year warranty
- CE / RoHS Compliant

#### COMPATIBLE ACCESSORIES

E4010	Glare Louvre	58mm Honeycomb provides glare protection
MR16AFL	Clip on frosted lens	To give a diffused light
MR16ASL	Clip on spread lens	To give a rectangular shape to the beam
MR16ABDF	Clip on filter	A vibrant blue filter can be used to add drama to water features and modern garden materials such as glass and stainless steel
MR16ACDF	Clip on filter	Champagne dichroic filter provides a mellow alternative to white light
MR16AGDF	Clip on filter	Green filter that can be used to enhance dull foliage
MR16AMDF	Clip on filter	Pale blue filter to give a moonlight effect
MR16APDF	Clip on filter	A purple filter that adds vibrant colour to dark subjects
MR16ARDF	Clip on filter	This Red filter adds a warm glow to enhance yellow and red foliage
MR16ASDF	Clip on filter	Skin tone filter gives statues a warmer skin like appearance



Lighting for Gardens Limited. Registered No.3678804.  
 Registered Office: Lower Clough Mill, Pendle Street, Barrowford, Lancashire BB9 8PH  
 VAT No 587 6855 66  
 Web: [www.lightingforgardens.com](http://www.lightingforgardens.com)  
 Email: [technicalsupport@lightingforgardens.com](mailto:technicalsupport@lightingforgardens.com)

Product design & specification subject to change or modification without notice. Image for illustration only. E&OE  
 Ver1.0 22/08/2016